



عاشا

TREE OF LIFE

BY R•EVOLUTION

YOUR HOME
YOUR TREE OF LIFE



INTERNATIONAL
**PROPERTY
AWARDS**

**WORLD'S BEST
PROPERTY**

EYWA
by R.Evolution

2023-2024

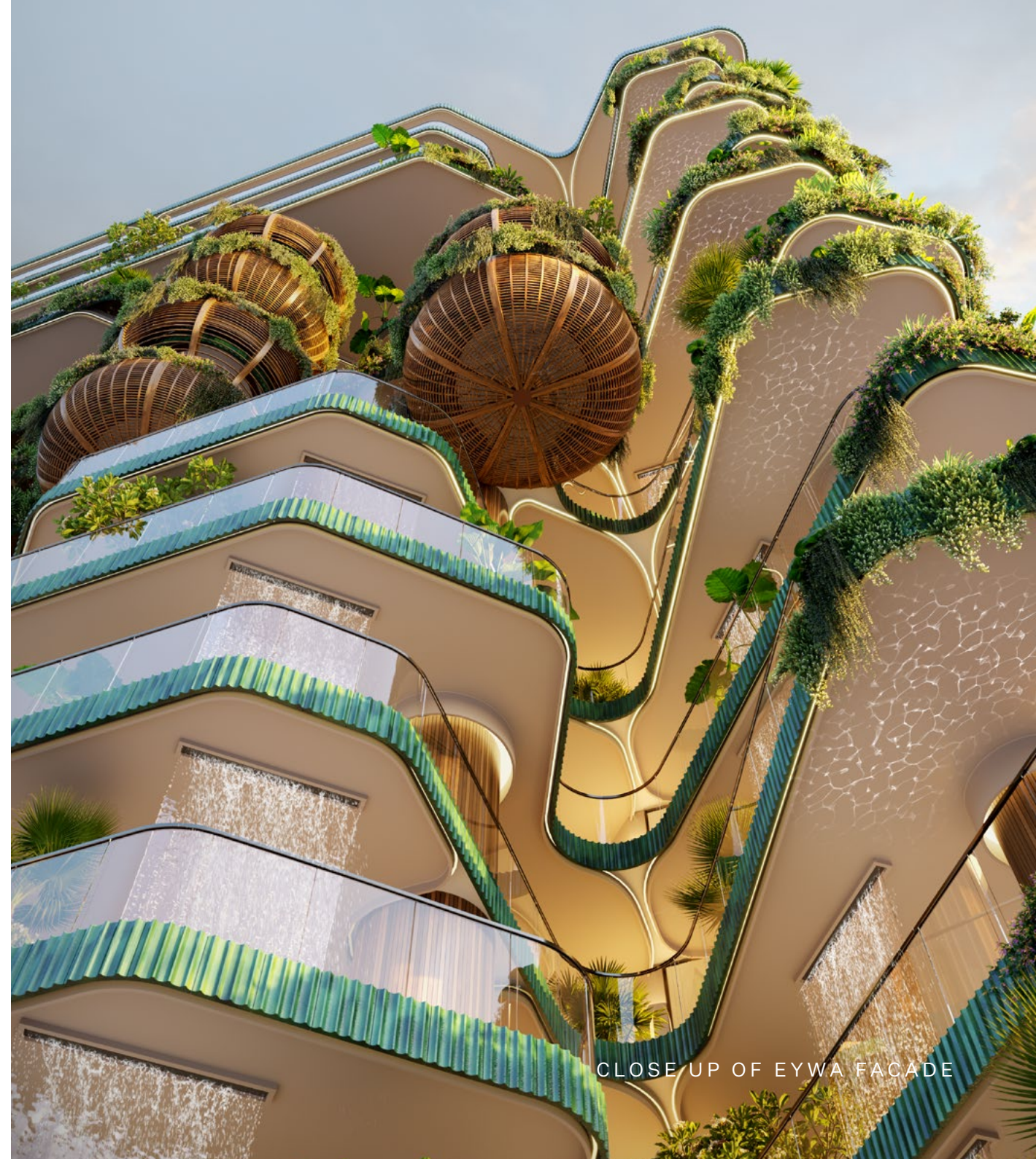


PLAY ME



Energy Youthfulness Well-being Ancient knowledge

With only 50 exclusive 2 to 5-bedroom waterfront residences with sizes ranging from 3,064 to 16,256 sq ft, this opulent residential building is a fusion of ancient knowledge about a man with state-of-the-art technologies, to create a harmonious living environment that supports physical, mental and social health, is a home where well-being is truly the essence of living.





VIEW FROM THE CANAL

The Tree of Life BY R•EVOLUTION

The next revolutionary generation of the XXIst century real estate!

In essence, Eywa represents a holistic approach to personal growth and well-being, guiding you towards a life filled with positive emotions, transformative experiences, deep connections and a harmonious balance between ancient wisdom and modern advancements.

By embracing the principles of Eywa, you can embark on a journey of self-discovery, empowerment and fulfillment that enriches your life and inspires those around you.

eywa.ae



50 EXCLUSIVE

—

2-5 BEDROOM












—

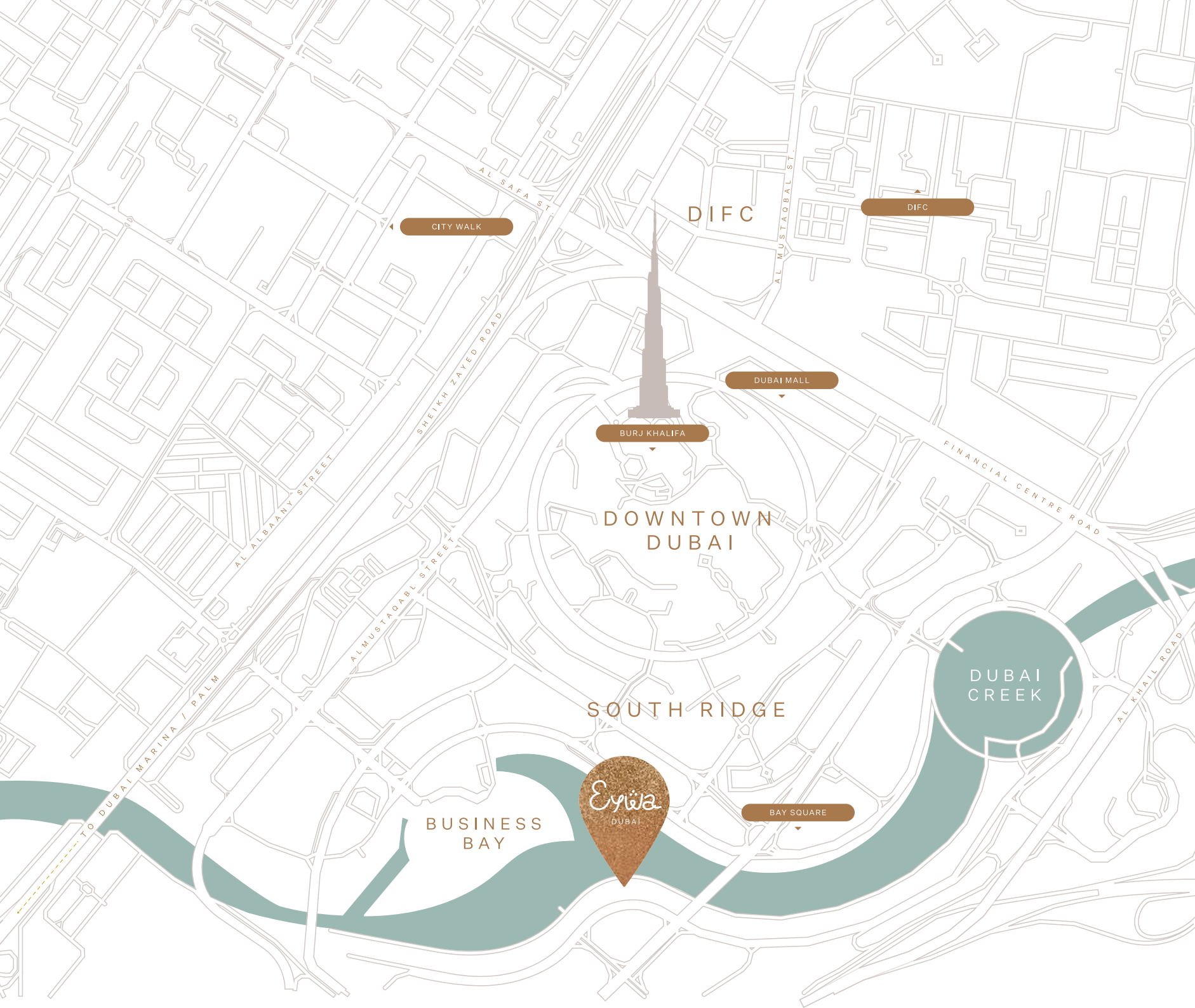
WATERFRONT RESIDENCES

APARTMENT TERRACE VIEW

DUBAI LOCATION

EYWA, Marasi Drive,
Business Bay, Dubai, UAE

-  Burj Khalifa ⌚ 8 min.
-  Dubai Mall ⌚ 8 min.
-  Dubai Opera ⌚ 8 min.
-  The Dubai Fountain ⌚ 8 min.
-  Jumeirah Beach ⌚ 10 min.
-  Mall of the Emirates ⌚ 10 min.
-  DIFC ⌚ 12 min.
-  Dubai International Airport ⌚ 15 min.
-  Dubai Marina ⌚ 15 min.
-  Burj Al Arab ⌚ 15 min.
-  Palm Jumeirah ⌚ 20 min.



"WILD LUXURY" of a unique life experience

Eywa, The Tree Of Life, represents a new standard in luxury real estate development, where well-being, sustainability and community are at the forefront.

With amenities like crystal gardens, 'living' drinking water, and crystallized water pools with cascading waterfalls on every terrace, this opulent and health-focused building offers a unique and truly exceptional, transformative living experience for those who value their health, longevity and connection to nature.





Eyea

DUBAI
BY REVOLUTION



The Tree of Life BY R•EVOLUTION

Tree of Life

Strikingly unique from your very first glimpse, Eywa instantly evokes a glorious Tree of Life.

An organic canopy of branches, an enticing weave of roots, a living breathing building that represents timeless wisdom and enduring growth.

Open round columns, intertwining branches and trunks personify the Banyan tree, the Tree of Life, whose branches support our world and whose roots spread down into the underworld, a symbol of the constantly renewing and reviving world, an inexhaustible source of life.



Architectural inspiration, banyan tree

Wellness that goes beyond

At the heart of Eywa's philosophy is a profound dedication to enhancing the well-being, health and longevity of its residents. Drawing inspiration from ancient knowledge about human nature and combining it with the latest advancements in healthcare, technology, and community development, Eywa offers a holistic approach to urban living like never before.

Each residence is a light-filled spacious haven, with floor-to-ceiling windows framing breathtaking cityscapes. Seamlessly blending contemporary design with stunning natural elements, each unit features greenery, a private pool and waterfall, and unique stone slabs, fostering a deep connection to nature.



Quality of Life BY R•EVOLUTION



APARTMENT TERRACE

eywa.de

The Most Health-Conscious Building on Earth

The Tree of Life BY R•EVOLUTION

Promoting Health & Longevity

Eywa emphasizes the importance of holistic well-being, encompassing physical, mental, and emotional health. By adopting healthy lifestyle practices, nurturing relationships, and prioritizing self-care, you can enhance your longevity and vitality.

Imagine feeling thoroughly, unequivocally well.

Mental clarity.

Relentless energy.

Living life to the fullest.

Here at Eywa, we are committed to helping our residents to unlock their health potential – mentally and physically.

The Tree of Life BY R•EVOLUTION

eywa.ae

APARTMENT TERRACE



Eywa is one of a few Vastu Shastra
compliant multi storey residential
buildings in the world

The Tree of Life BY R•EVOLUTION



A home where harmony & balance are a way of life

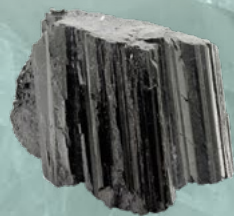
By incorporating crystals throughout the building, including in the foundation and the internal spaces that work together we create positive energy flow, an environment where people can thrive – mentally, physically and spiritually.

Picture a place where conflicts melt away, concentration soars, and creativity flourishes. That's what you can expect with crystals at work. Our combination of crystals scientifically designed to work together help us sharpen our minds, help us find solutions to life problems, and inspire confidence in our own decisions. Specific crystals, geodes and precious stones are placed in columns and concrete slabs from the bottom to the top of the building in a unique pyramid shape, as well as crystal gardens and Travertine floors in public areas that will work together to bring positive energy within each and every space in Eywa.



This system allows:

- to fill the building with energy,
- to clean the space from the dark manifestations of human nature,
- to reduce conflict,
- to increase concentration and ability to solve mental tasks,
- to harmonize the space for a happy life,
- to promote the development of mental and physical abilities, especially in children.

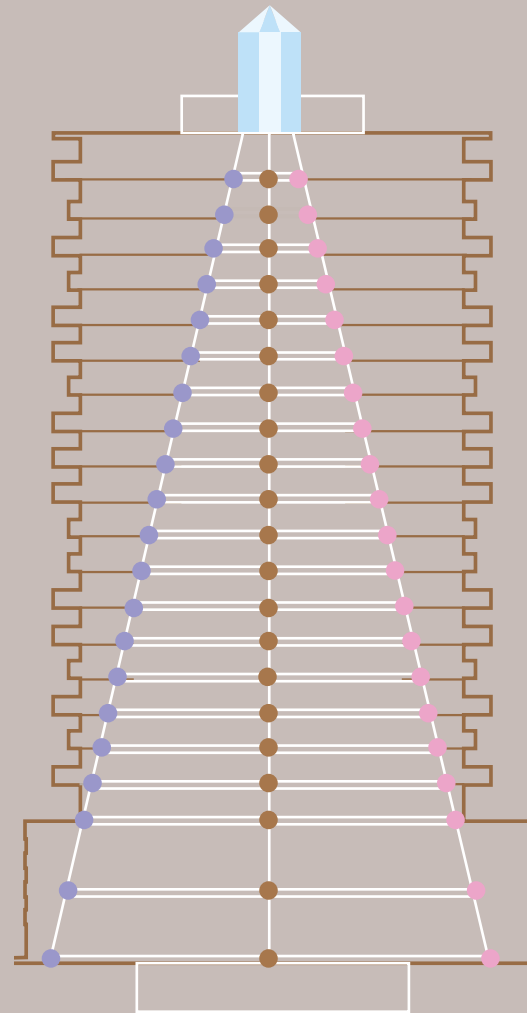


Crystals such as Selenite, Malachite, and Green Jade aren't just for show – they're powerhouses of positive energy, carefully selected to bring balance and bliss to every corner of Eywa. Our ancestors knew that the key to a happy, healthy home lies in harnessing the forces of nature. And that's exactly what we're doing. From the foundation to the rooftop, every inch of this place is infused with the wisdom of the ages.

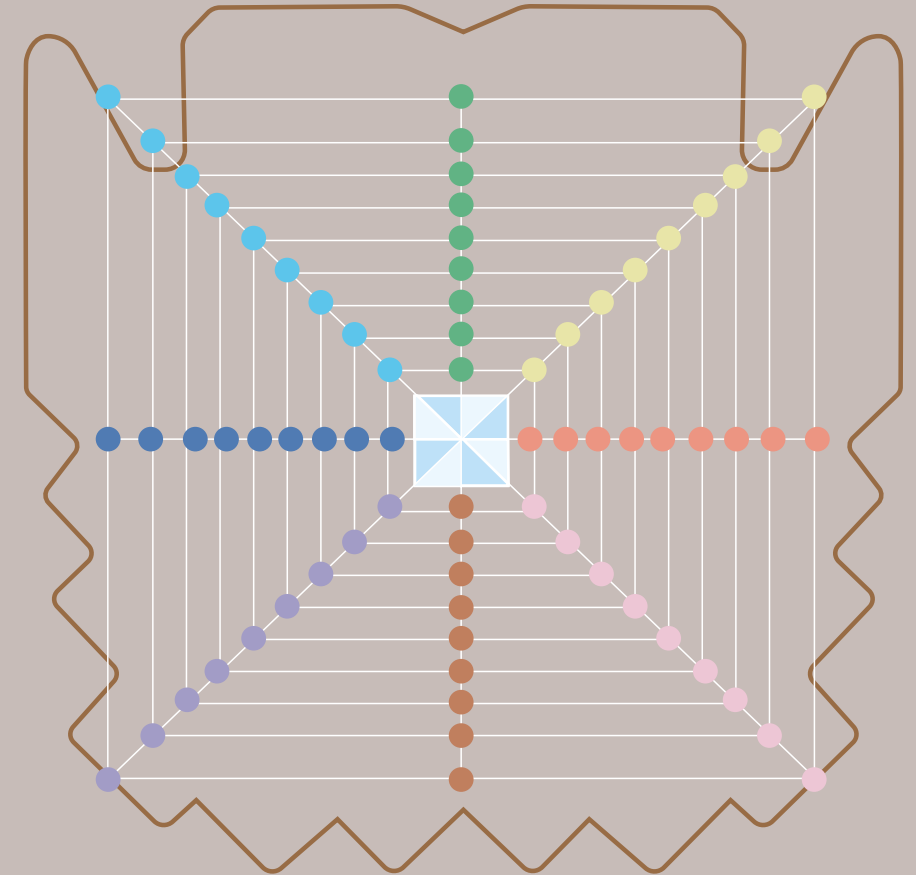
Crystal Pyramid Within The Building

Eywa is the first and only residential building with a built-in pyramid featuring 1,450 semi-precious stones and crystals, weighing a total of 14,000 kg.

This unique architectural element is designed to enhance the health and increase the life expectancy of all those residing within. It helps boost focus, enhances cell regeneration and dispels conflict.



FRONT VIEW



TOP VIEW

THE PYRAMID

Turns on the body's own natural healing system to reverse aging & activate dormant parts of our DNA.

Extends life

- Provides with more energy
- Helps to maintain proper immune function
- Helps to reduce stress and tension
- Supports bone health
- Supports healthy cell function and metabolism
- Supports nervous system

Expands Consciousness

- Balances the hemispheres of the brain
- Helps to clear negative cellular memory
- Supports mental clarity and brain function
- Induces higher levels of cellular energy
- Begin to use more than 10% of your brain
- Helps with focus and staying on task

Material selection rooted in mindfulness & sustainability

We prioritize materials that emit positive energy and promote harmony within living spaces. Natural elements such as wood, stone, and clay are favoured for their grounding and balancing effects:

Wood: Known for its warmth and grounding properties, wood fosters a sense of connection to nature and promotes relaxation.

Stone: Revered for its stability and endurance, stone imbues spaces with a sense of resilience and strength.

Clay: With its purifying and calming qualities, clay creates environments conducive to rejuvenation and well-being.

WOOD

The natural beauty

The richness of natural and solid wood. The exotic textures of veneers give the impression of a detailed and precise drawing embracing the art of the nature.

The wood is left in its natural state, with only minimal sanding and finishing applied to protect the wood and enhance its natural beauty. The required wood tonality is achieved with tinted wax or oil.



Australian Paldao veneered
doors with hidden hinges

APARTMENT ENTRANCE DOOR

Multilayer oak parquet

The Tree of Life BY R•EVOLUTION

Multilayer beech parquet

STONE

The natural beauty

We appreciate the value of materials through contrasts.
Strong, natural textures and light, fragile accents.
Soft fabric and luxurious veneer.
Natural stone pattern and neutral plaster.

Honed matt travertine tiles are used for floors in dry areas,
the pitted surface is filled with transparent epoxide. In wet
areas brushed travertine tiles are used, with a rough, slightly
uneven surface that is less slippery when wet.



Textured limestone slabs

Roman travertine



Roman travertine



Natural stone slab

Roman travertine

BATHROOM

The Tree of Life BY R•EVOLUTION

Miele



BOSCH

LIEBHERR

- front of house kitchen- hobs,
microwave, oven, dishwasher,
extractor.

Roman travertine

Australian Paldao
veneered doors
with hidden hinges



Energy principles in architectural design to optimize the health & wellness of residents:

Natural light: Maximizing natural light exposure enhances mood, regulates circadian rhythms, and promotes Vitamin D synthesis.

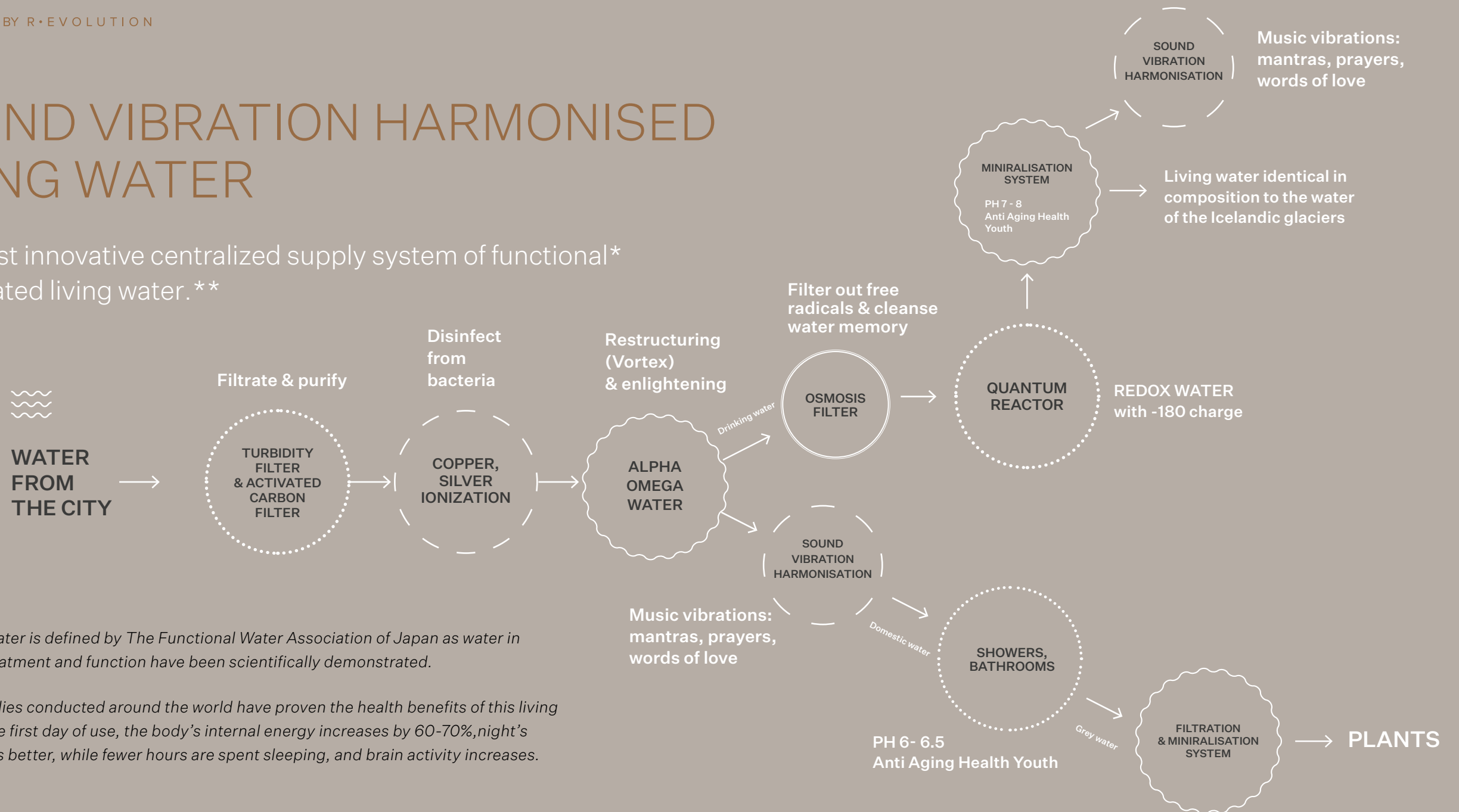
Biophilic design: Incorporating elements of nature indoors fosters psychological well-being and reduces stress.

Air quality: MERV14 filters with the possibility of natural ventilation, and non-toxic materials ensure prioritizing optimal indoor air quality, supporting respiratory health.

Water quality: Eywa combines the best that modern science has to offer: structured or activated water for drinking, water with the best pH for swimming pools and bathrooms.

SOUND VIBRATION HARMONISED LIVING WATER

The most innovative centralized supply system of functional* or activated living water.**



* Functional water is defined by The Functional Water Association of Japan as water in which both treatment and function have been scientifically demonstrated.

** Various studies conducted around the world have proven the health benefits of this living water. After the first day of use, the body's internal energy increases by 60-70%, night's sleep becomes better, while fewer hours are spent sleeping, and brain activity increases.

Connecting with Nature Community

Eywa underscores the importance of connecting with the natural world and engaging with your community. By immersing yourself in nature, participating in community initiatives, and supporting environmental causes, you can cultivate a sense of belonging and stewardship for the planet.

SUSTAINABILITY & WELL-BEING

EYWA strongly supports green development, sustainability and anticonsumerism and, using energy efficient systems, aims to reduce energy consumption by at least 40% compared to traditional designs and standards. Only durable materials of the highest quality sourced as per LEED Platinum, WELL Platinum requirements, are used for the exterior and interior design, following our principle of anti-consumerism and contributing to the reduction of the carbon footprint.



LEED PLATINUM CERTIFICATION

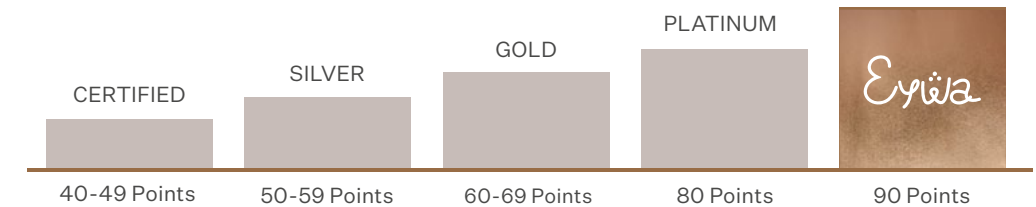
LEED Certification (Leadership in Energy and Environmental Design) is the most widely used green building rating system in the world. To achieve LEED certification, a project earns points by adhering to prerequisites and credits that address carbon, energy, water, waste, transportation, materials, health and indoor environmental quality. LEED certified buildings save money, improve efficiency, lower carbon emissions and create healthier places for people.



WELL PLATINUM CERTIFICATION

WELL Certification is managed and administered by the International WELL Building Institute (IWBI), a public benefit corporation whose mission is to improve human health and wellbeing through the built environment. WELL Building Standard measures attributes of buildings that impact occupant health by looking at seven factors, or Core Concepts: Air, Water, Nourishment, Light, Fitness, Comfort, Mind. WELL optimizes cognitive and emotional health through design, technology, and treatment strategies.

OUR PRIORITIES ARE: WELL-BEING & SUSTAINABILITY,
UNITY WITH NATURE & COMMUNITY.



The goal of LEED and WELL is to create better buildings that:

- Reduce contribution to global climate change
- Enhance individual human health
- Protect and restore water resources
- Protect and enhance biodiversity and ecosystem services
- Promote sustainable and regenerative material cycle
- Enhance community quality of life.

What does LEED Platinum & WELL Platinum give to you?

1. These certificates guarantee the highest and the most sustainable quality materials and technical solutions used in the building development.
2. Working in such a building brings a beneficial impact on your health and longevity: both mental and physical.
3. Utility bills are much lower than in an ordinary building due to energy efficiency and durability of the materials used.
4. There are few buildings in the world that are both LEED Platinum and WELL Platinum certified, and customer awareness of the value of such buildings is growing every year. That is why such buildings are the best investments and are the most competitive and valuable product in the real estate market even at resale.
5. You contribute to the conservation of the planet's resources and life on the Earth.



Taste

Pleasant surprises for residents, such as specially selected exclusive kinds of coffee, some treats made from natural ingredients, in the Club House and the Main Hall. The Chef's Table at the restaurant at Eywa's Apartment, where you can pre-order your favorite dishes prepared to your taste and with ingredients purchased from your list.



Smell

The air in the public places is saturated with the aroma of the Bali jungles (*ylang-ylang, jasmine, champak*) - a special fragrance created specifically for Eywa on the basis of essential oils. Blooming throughout the year trees and shrubs fill the air with a delicate aroma.



Touch

Natural rough surfaces both in interior design and in architecture, including crystals, which are recommended not only to admire, but also to touch.

SENSORIAL EXPERIENCE



Hearing

High-End acoustic systems capable of transmitting vibrations with a frequency of 432 Hz, which enhance the regeneration and soothe the body, are in the Club House, SPA, the Main Hall and Gym.

Spatial High-End 3D, 360° audio in the Main Hall helps a person to be in the here and now as the most important moment of his life. The music is chosen to harmonize energy and life in Eywa.



Light

Specially selected soft yellow light color that can be adjusted depending on the scenario, and no aggressive direct light, only hidden light sources in public areas.

Subdued base light intensity from reflected or hidden sources, both facade decorative elements and trees illumination work as reflected light sources, outdoor fireplaces and an open air cinema.



Equilibrium

Flying art objects in the atrium of the Main Hall, flying trees on the facade, waterfalls - on the facade and in some apartments, flying dining areas on the terraces in the apartments with stunning views.

FULL CYCLE FOR LONGEVITY

Physical, Mental & Emotional Health + Social connection

Lifestyle-related diseases such as obesity, diabetes, hypertension, heart attack, cancer, stroke, etc. are the leading causes of death and disability today. Prevention of these diseases (NCDs) is often significantly less costly than treatment.

Good lifestyle choices related to nutrition, physical activity, stress management, sleep, social habits and the environment are key to improved health and longevity.



PENTHOUSE YOGA ROOM

The Tree of Life BY R•EVOLUTION

Physical & mental well-being
go hand-in-hand



Our state-of-the-art Wellness Spa is a fully-integrated part of the experience with a special program "How to improve your well-being with the help of a sauna, hammam and a cold plunge pool."

A lounge area with Faraday mesh curtains invites you to enjoy a very healthy relaxation, free from any electromagnetic waves.



Rituals Of Eywa

1. Sound Healing Session – once a week
2. Gong Ceremony “ Farewell To the Sun” – daily
3. Fire Ceremony (candles) – daily
4. Cinema Night – every Friday
5. Lectures/Masterclasses - once a week
6. Culinary Theater Performance – twice a week
7. Celebrations of the residents’ birthdays
8. Celebrations of all interational holidays



The Tree of Life BY R•EVOLUTION



The Tree of Life BY R•EVOLUTION

In essence, Eywa is more than just a physical space - it is a philosophy, a way of life, a testament to the boundless potential of human existence. It invites individuals to dive deep into the ocean of possibilities, to embrace their true essence, and to embark on a transformative journey towards a more harmonious and enriched way of living.

A stylized illustration of a tree with a thick, textured trunk and branches. The leaves are represented by numerous small, elongated, gold-leaf-like shapes that create a dense canopy. The tree is set against a light gray background.

AMENITIES

The Tree of Life BY R•EVOLUTION



The Tree of Life BY R•EVOLUTION



The Tree of Life. BY R•EVOLUTION

BY

eywa.ae

POOL, RELAXATION AREA



The Tree of Life BY R.EVOLUTION



CHILDRENS PLAYGROUND

Offices & Workspaces

Well-being thrives on harmony.
And your work/life balance is
an important ingredient in that mix.





Library

Often called the tree of knowledge and wisdom, the banyan tree represents growth, strength and self-awareness.

Step between the trunks of our tree, and you'll discover how Eywa celebrates, shares and nurtures knowledge.

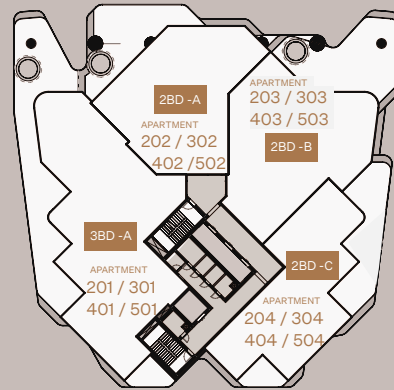
Nestled there, within our main hall, is a community library. This features a lovingly curated collection of more than 2500 books, including a range of books from a wealth of international philosophers.

UNITS' MIX

The Tree of Life BY R•EVOLUTION

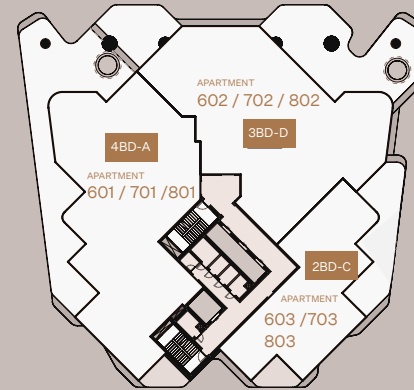
4 apartments per floor

LEVELS 2, 3, 4, 5



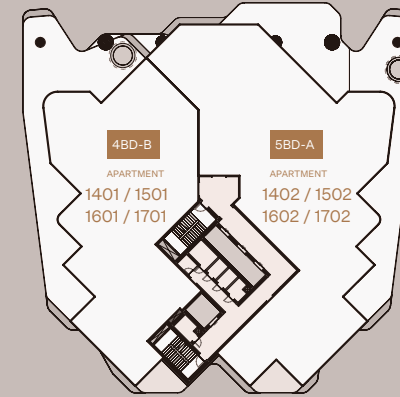
3 apartments per floor

LEVELS 6, 7, 8



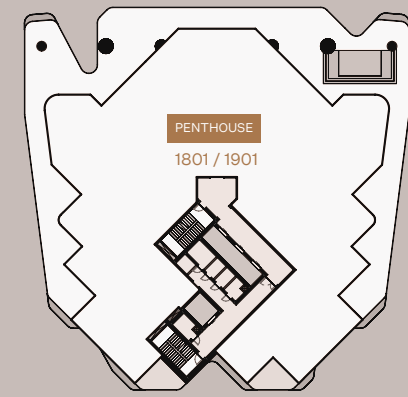
2 apartments per floor

LEVELS 14, 15, 16, 17

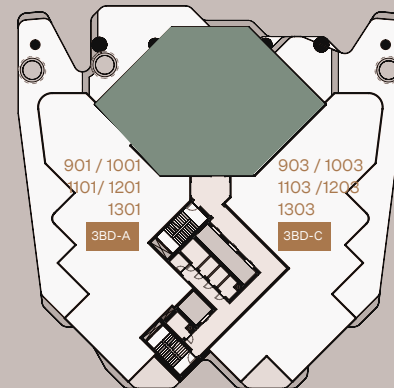


Penthouse

LEVELS 18 & 19

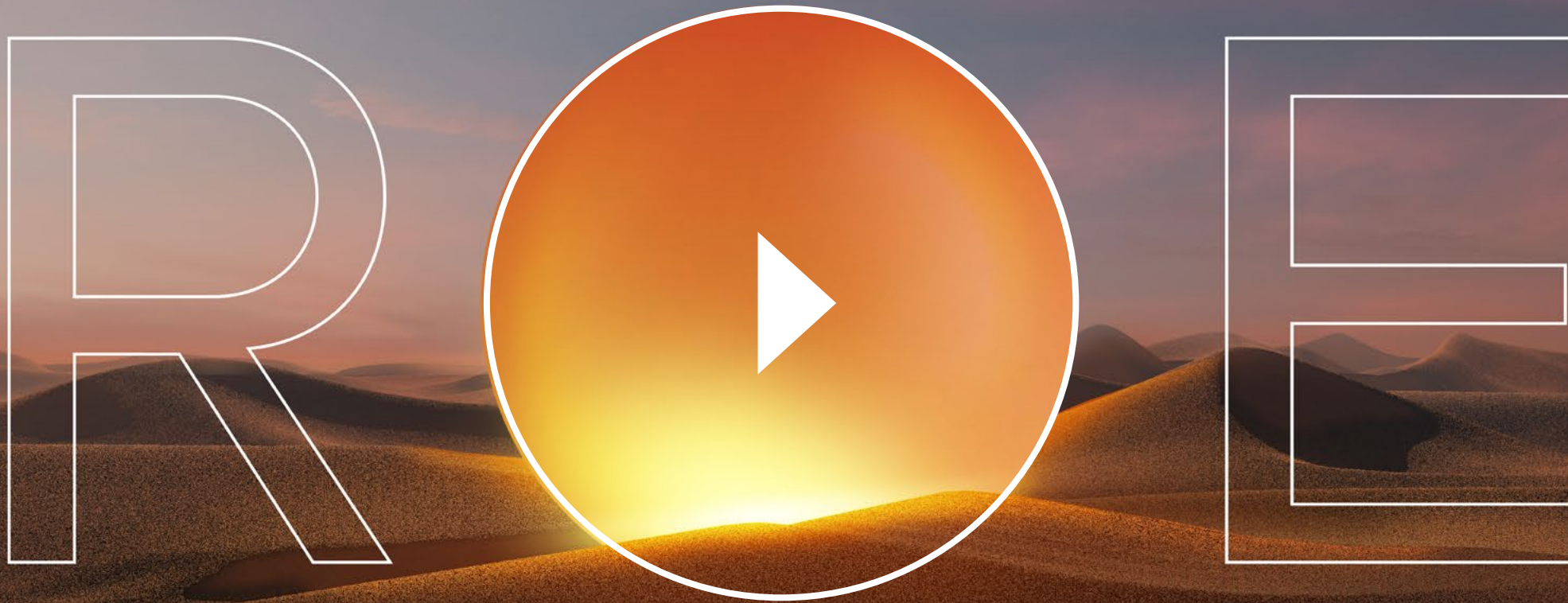


LEVELS 9, 10, 11, 12, 13



25 YEARS OF
EXCELLENCE

REAL ESTATE
R • EVOLUTION
DEVELOPER



Founded in 1999


DD & Development > 2,500,000 sq ft

In development - 1,300 000 sq ft

Largest single development project - EUR 270 million

Buildings developed total GDV €500,000,000 – 600,000,000

Number of employees > 60



+971 54 308 6000
sales@byrevolution.com

Sales Center L15/1504B
Burj Daman, DIFC, Dubai, UAE

eywa.ae